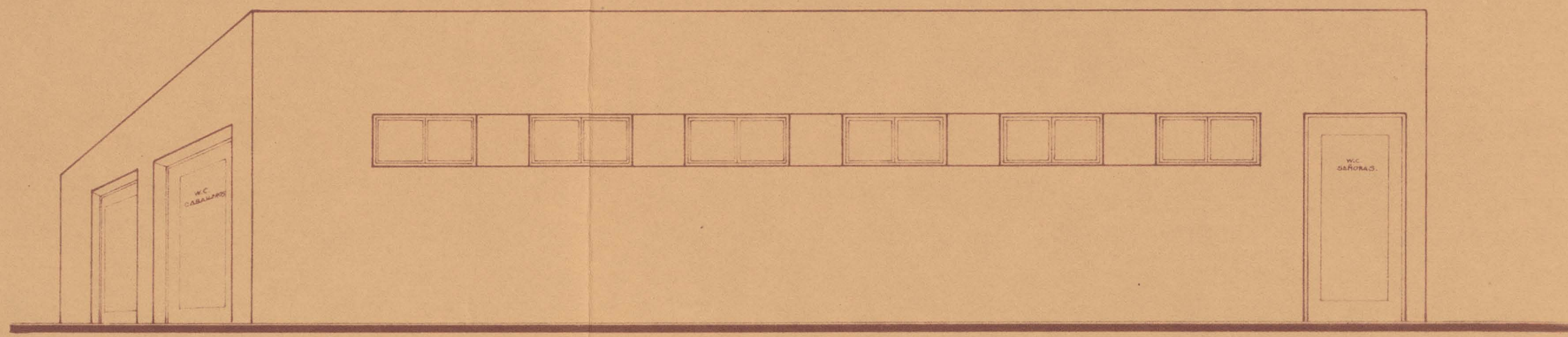
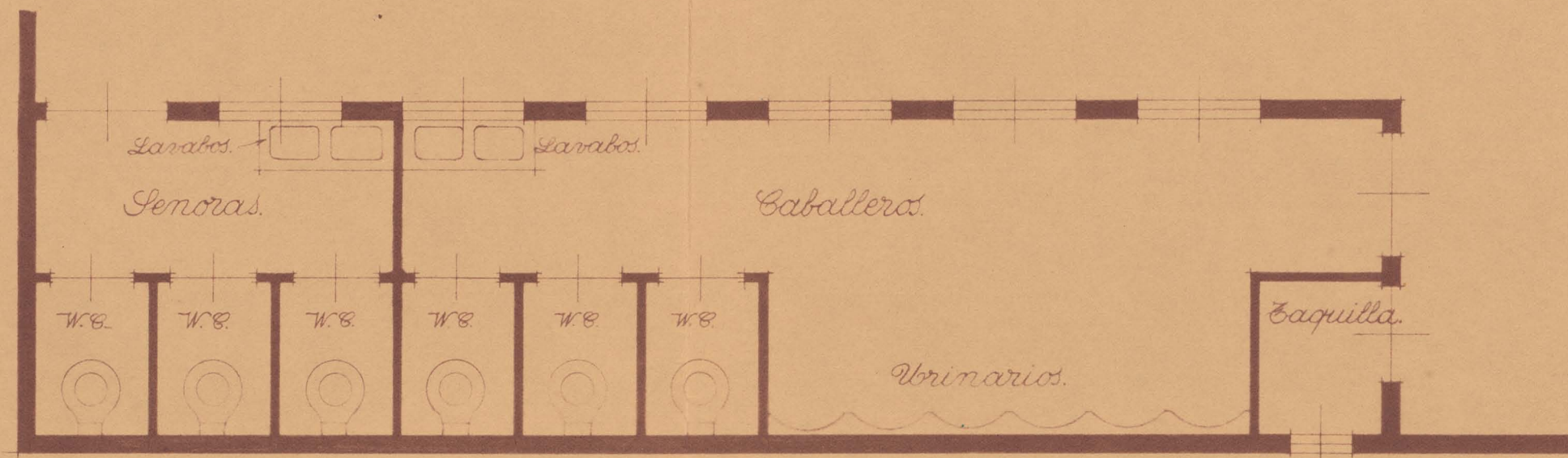


Edificio para servicios de general
Escala 1:50

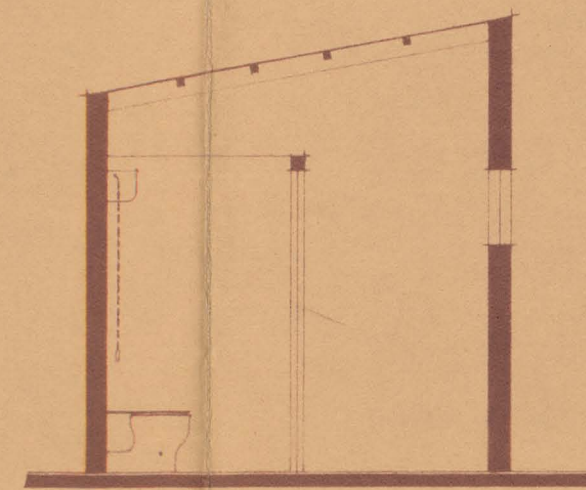
Fachada interior



Planta

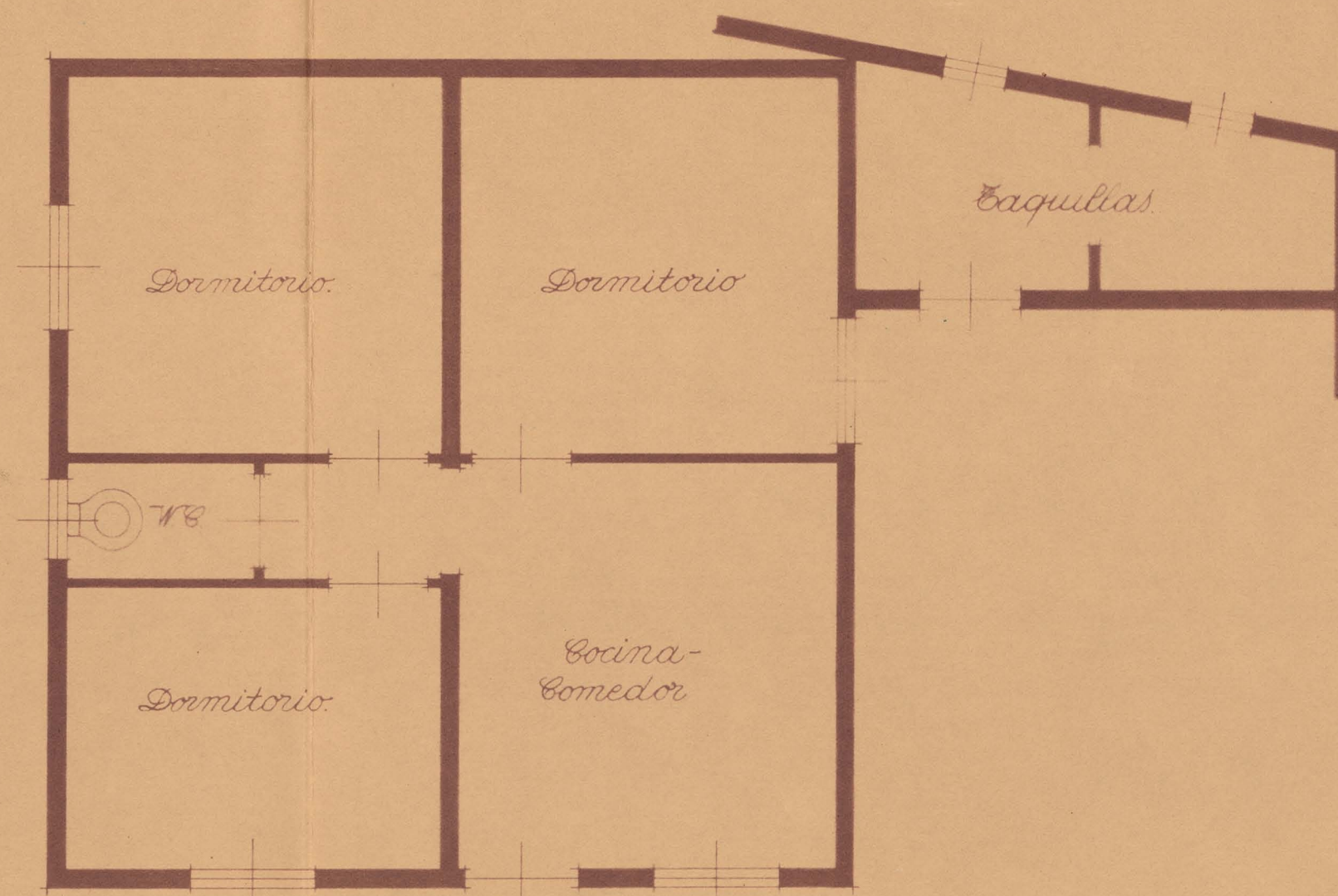


Sección

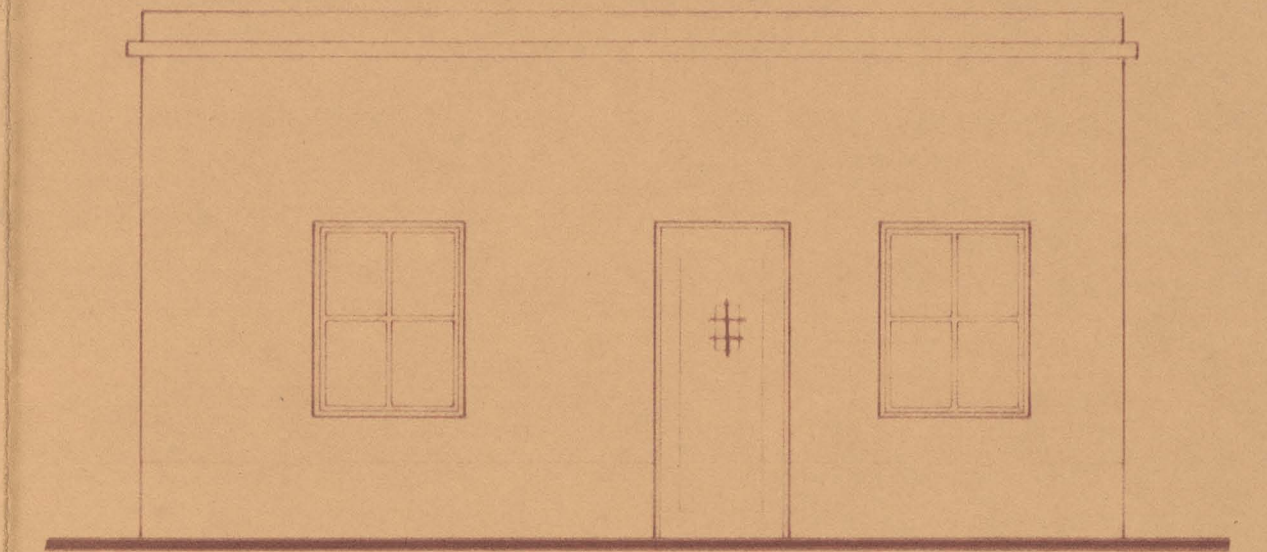


Edificio para vivienda del conserje
Escala 1:50

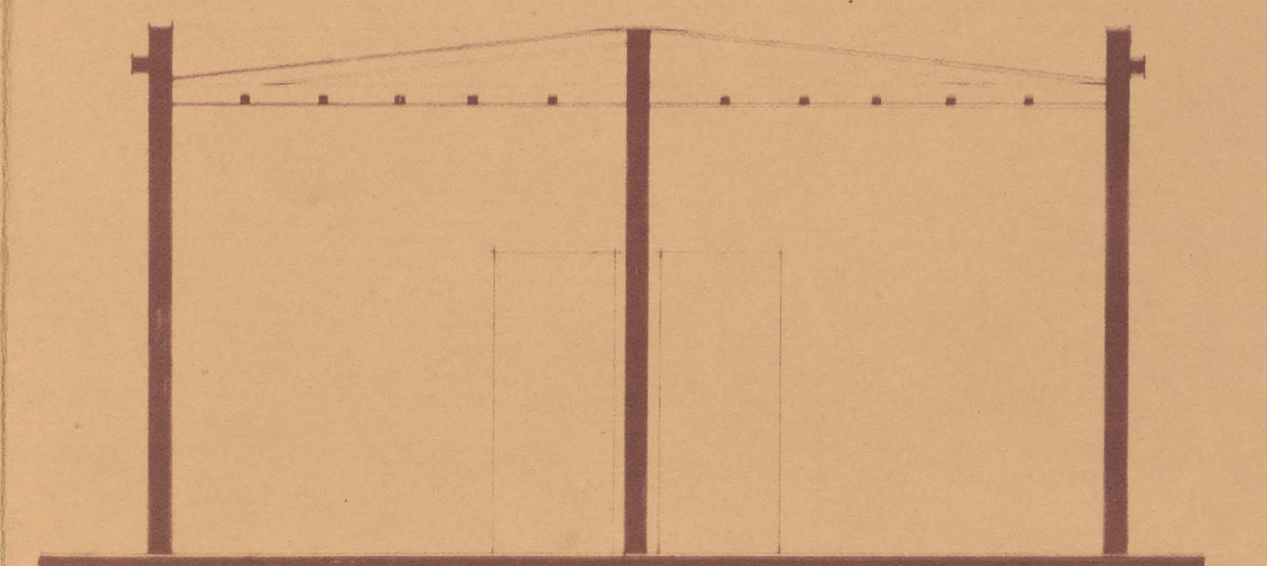
Planta



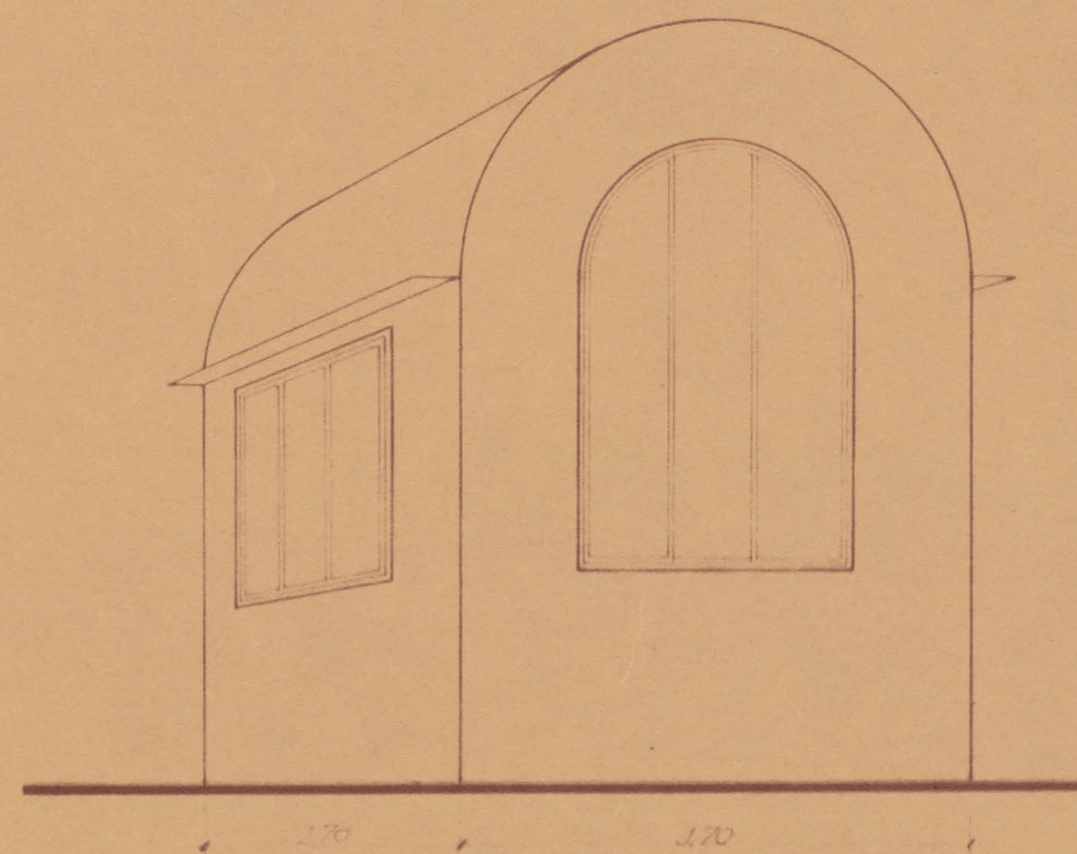
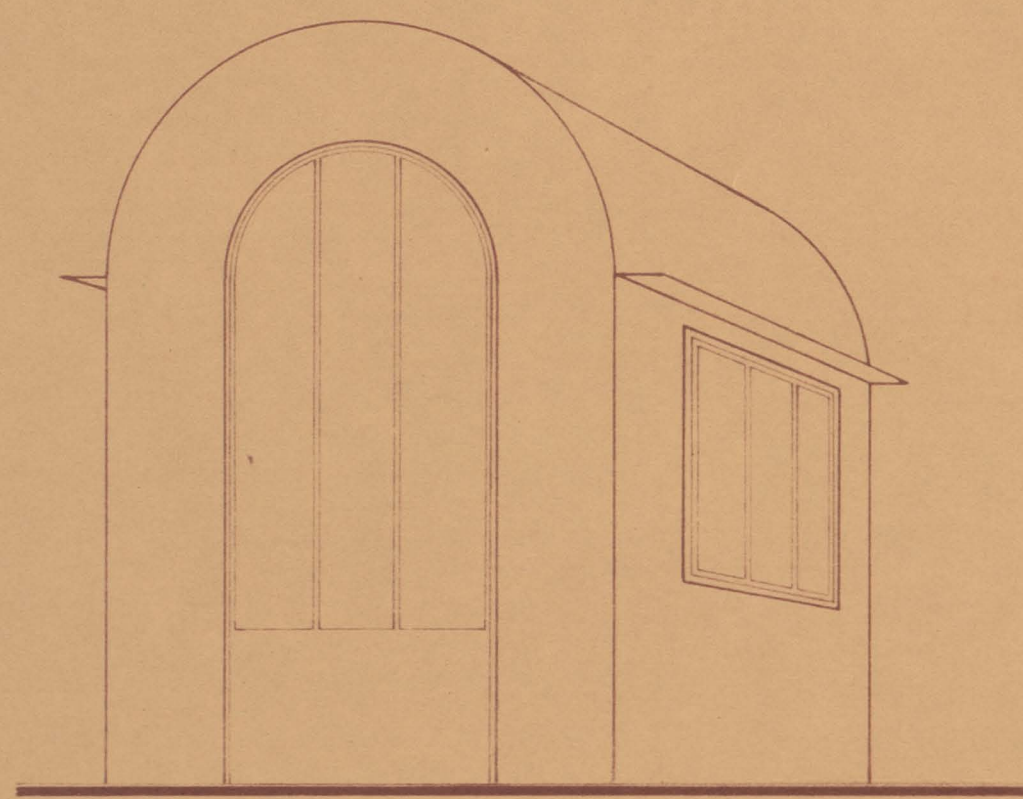
Fachada



Sección

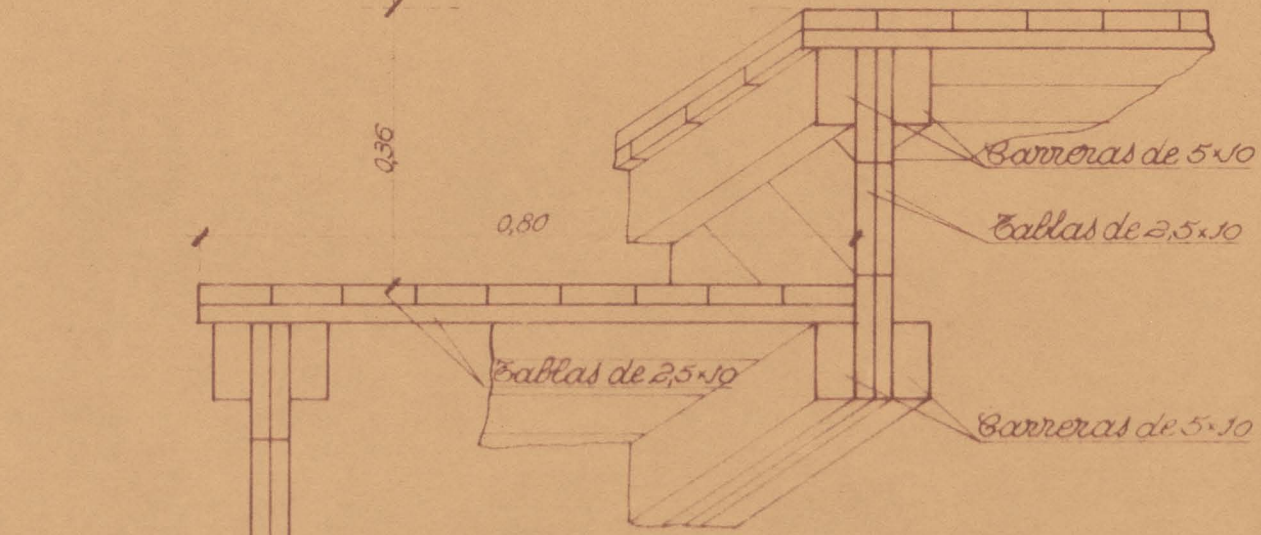


Caseta para jueces y fotógrafos
Escala 1:25

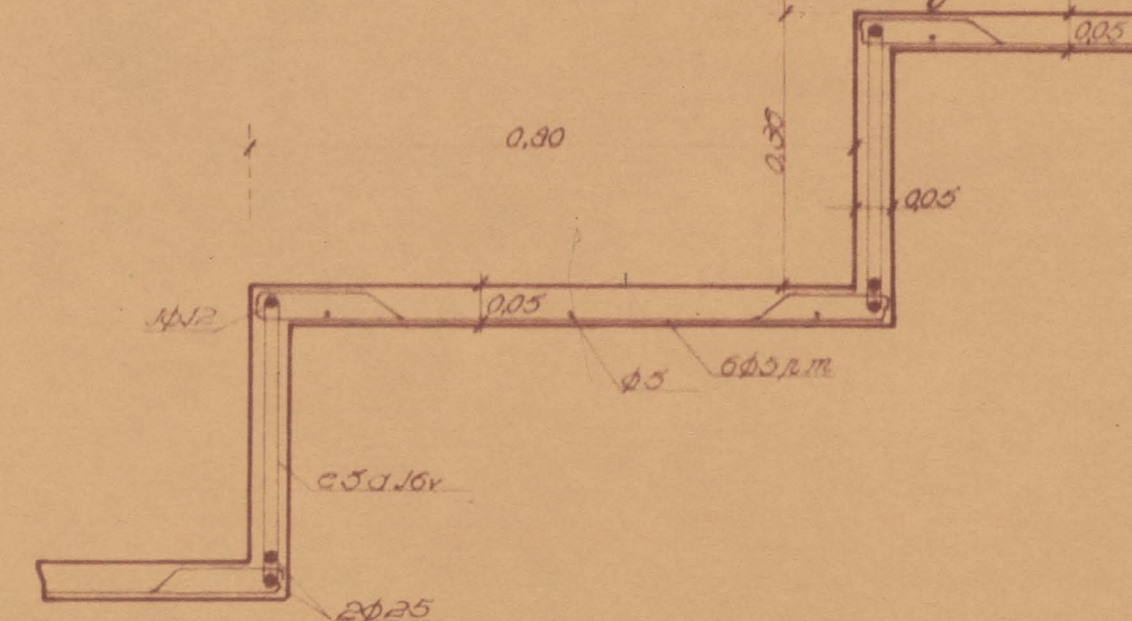


Detalle del peldaño de la tribuna de preferencia
Escala 1:10

Solución de madera

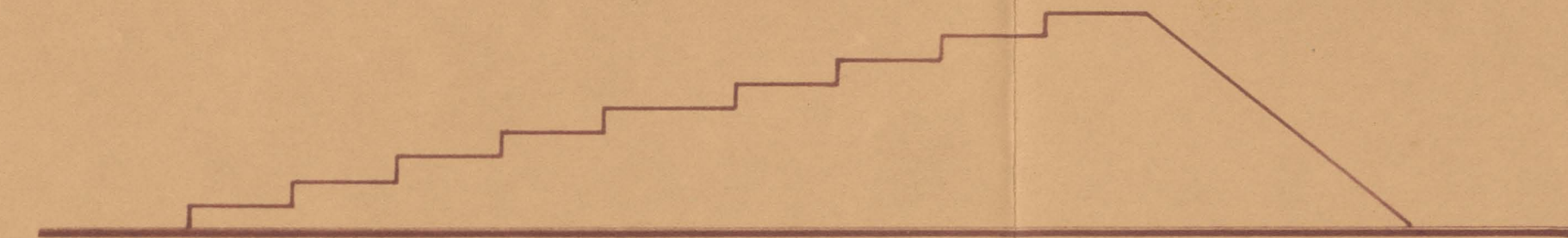


Solución de hormigón

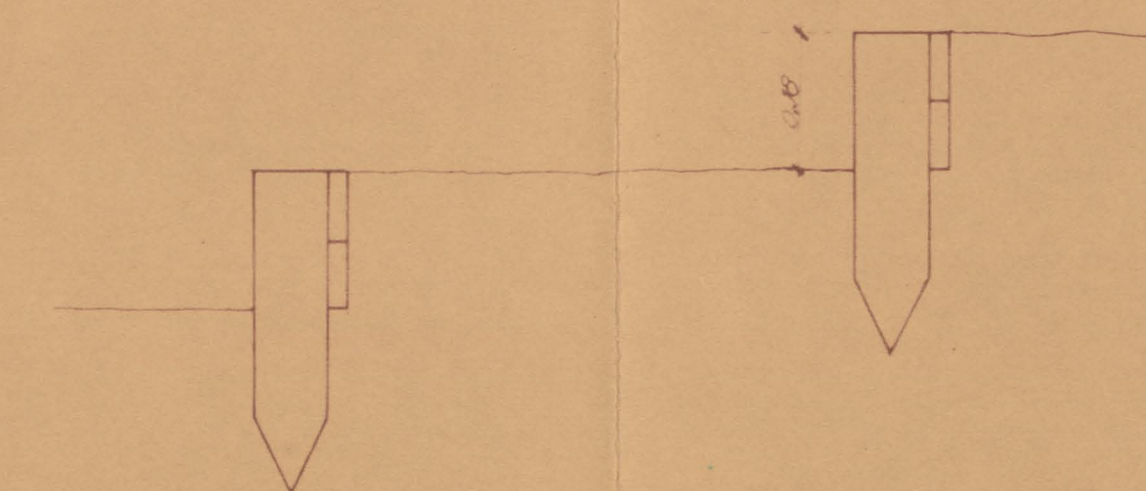


Graderio de general

Sección
Escala 1:50



Detalle
Escala 1:10



Madrid 15 de Enero de 1936.
El Ingeniero.

proc. comp. db. Amoz. traz. Bazar. Of. de. San. de. Sevilla. Luardo Torroja 15/1/1936 ord. Oficina Técnica nº306.203