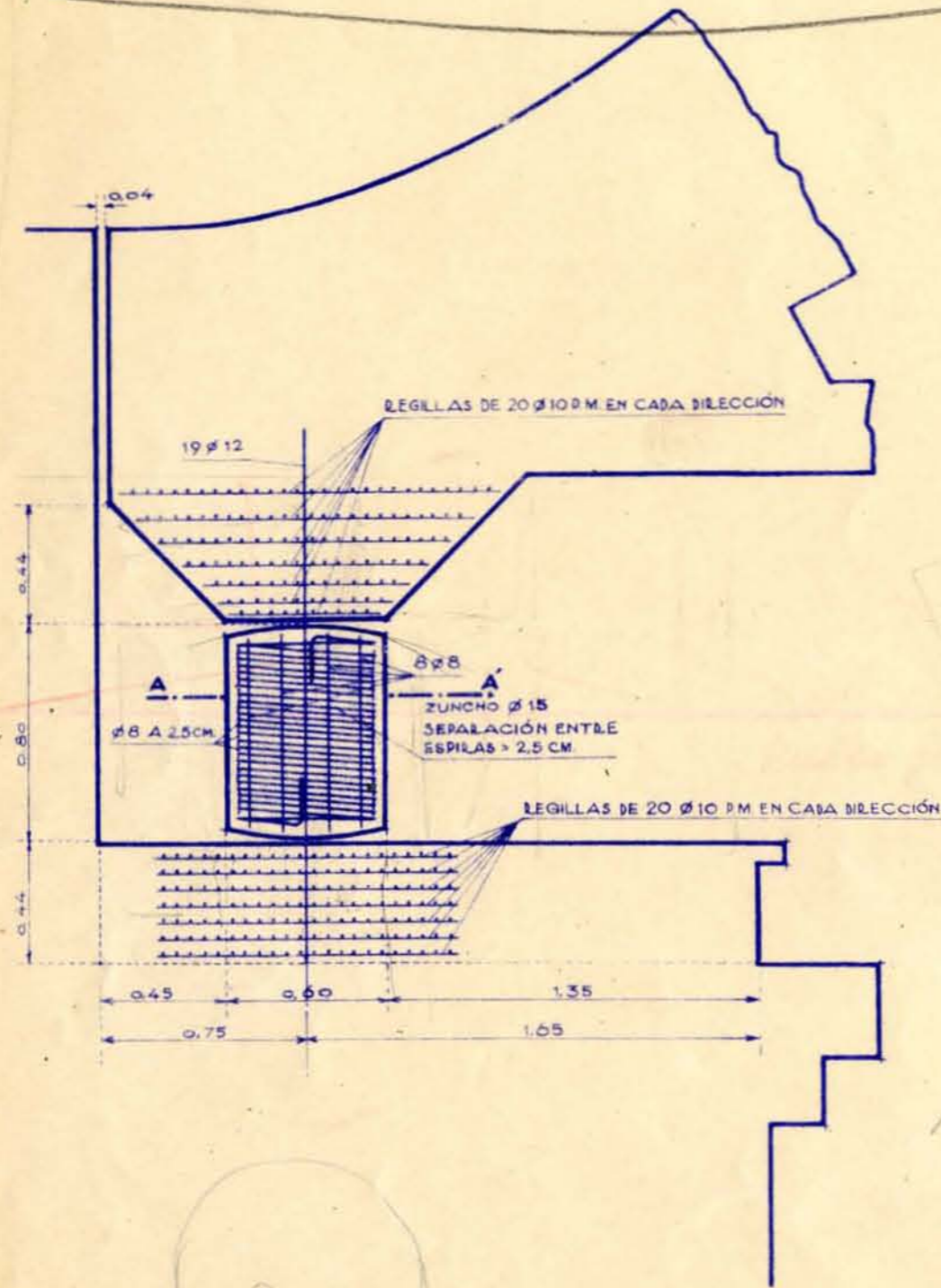
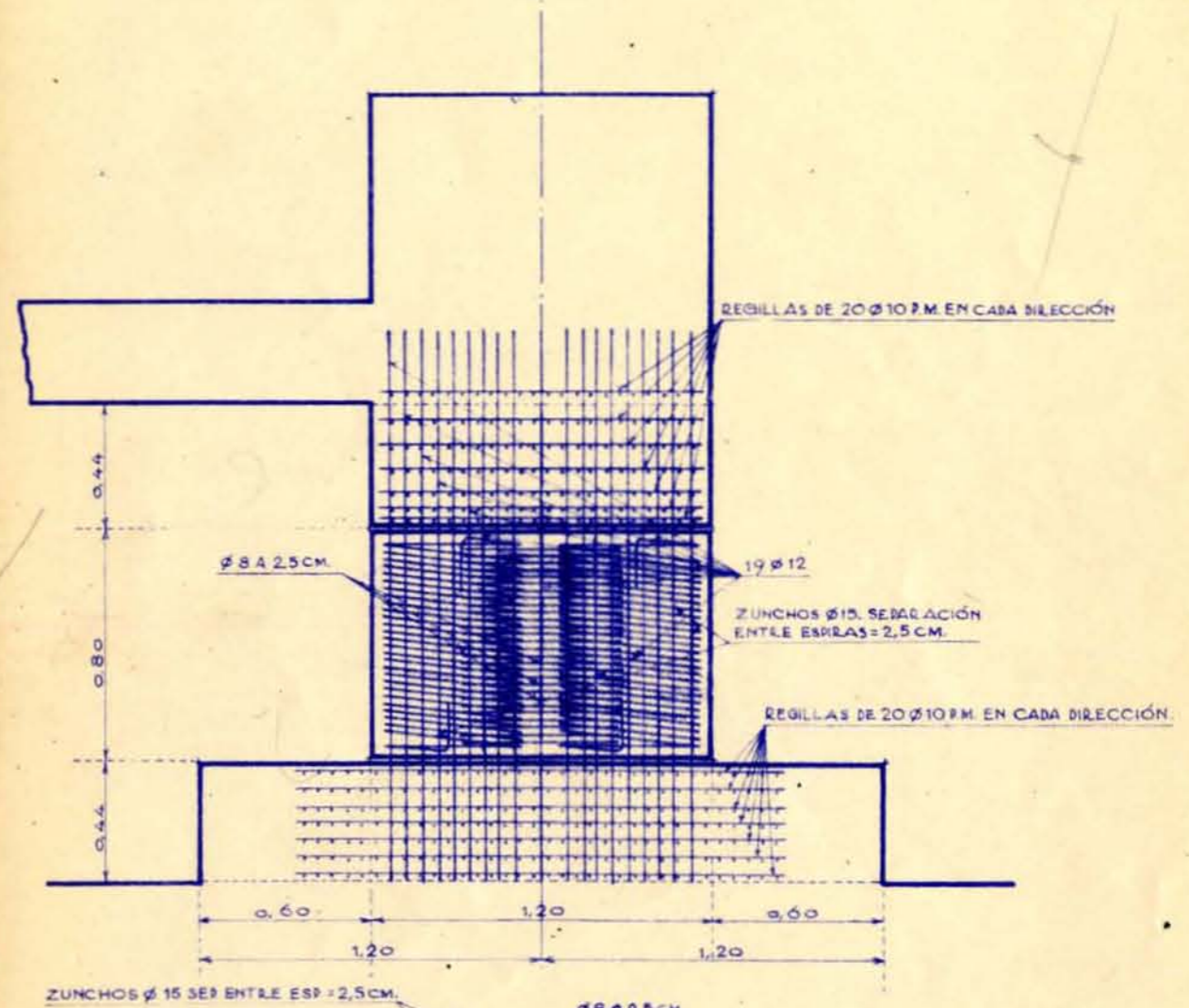


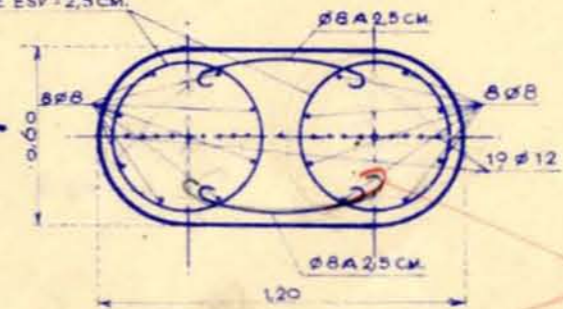
*libujado*  
SECCIÓN LONGITUDINAL



SECCIÓN TRANSVERSAL



SECCIÓN HORIZONTAL  
POR A-A'



MADRID ABRIL 1940  
EL INGENIERO DE CAMINOS

$\frac{1.2}{3.22} \times 110 =$   
 3600  
 $24 \times 30 = 720$   
 6400  
 1600