

TORREÓN PARA SUJECCIÓN DE PUERTAS. ESCALA 1:50.

SECCIÓN VERTICAL a-b

SECCIÓN VERTICAL c-d

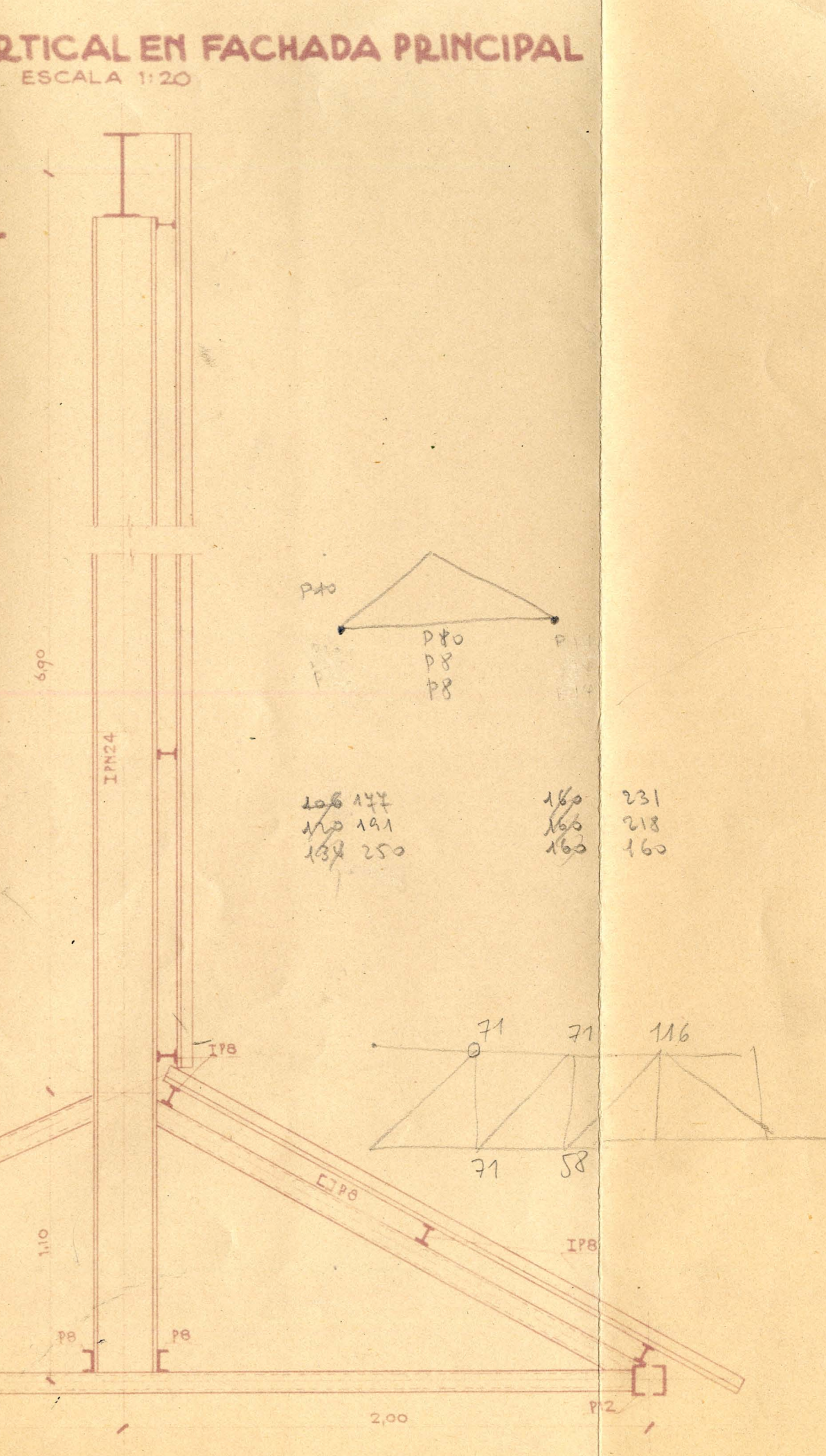
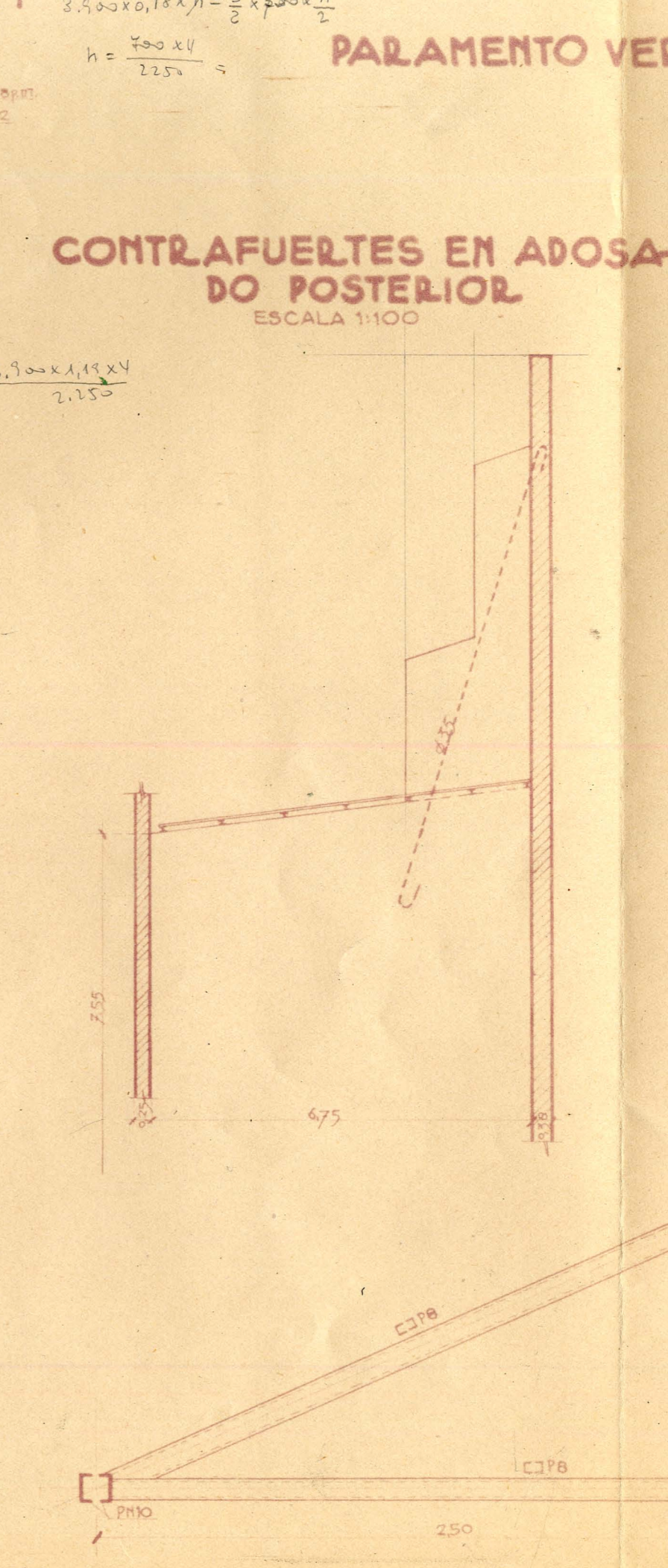
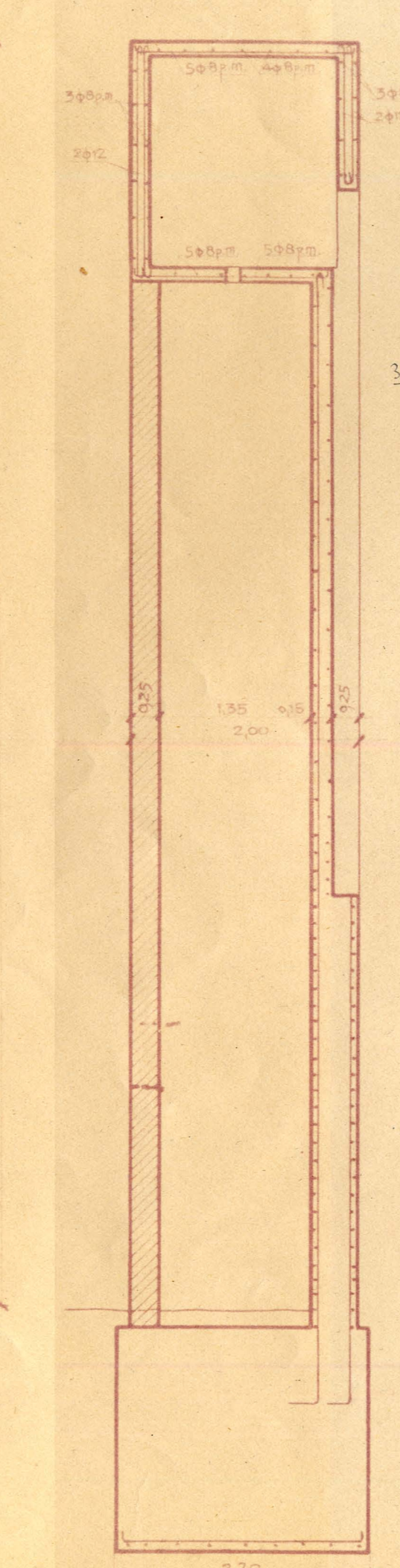
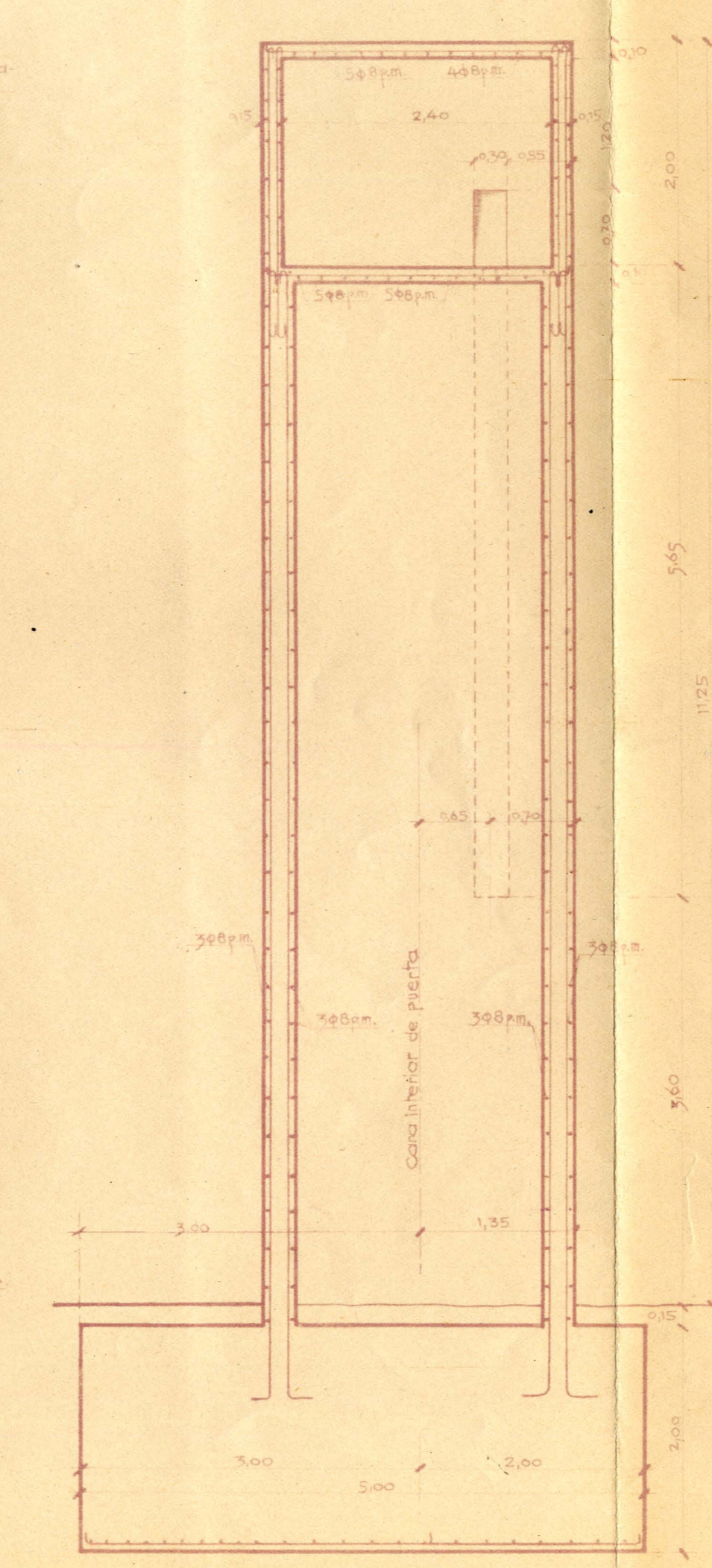
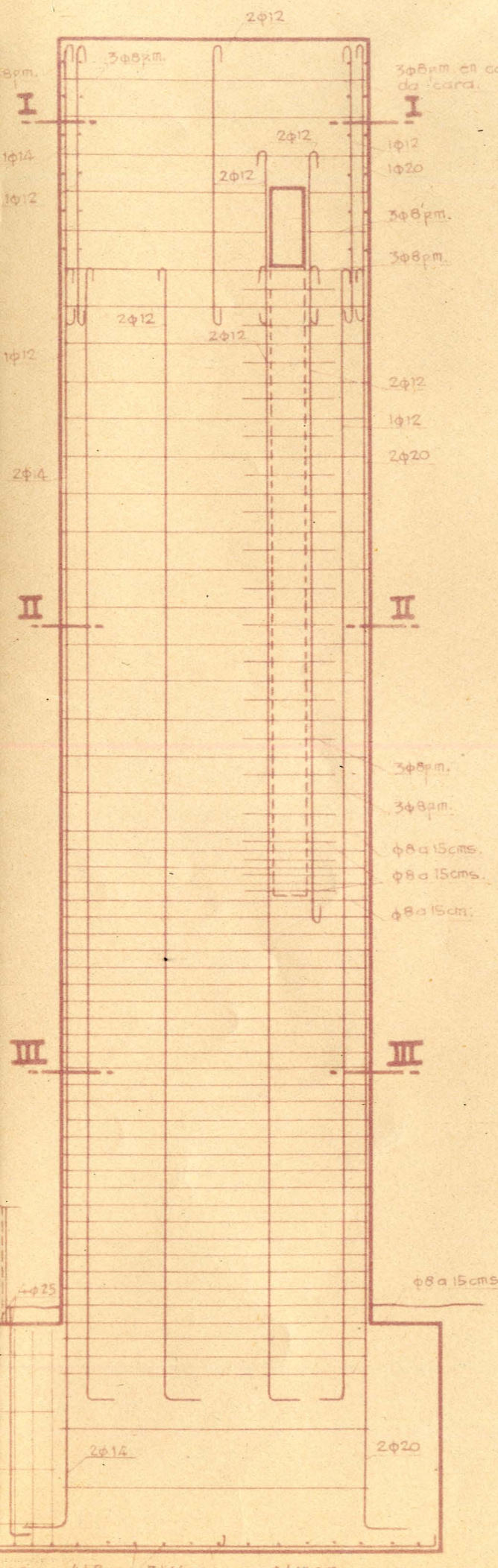
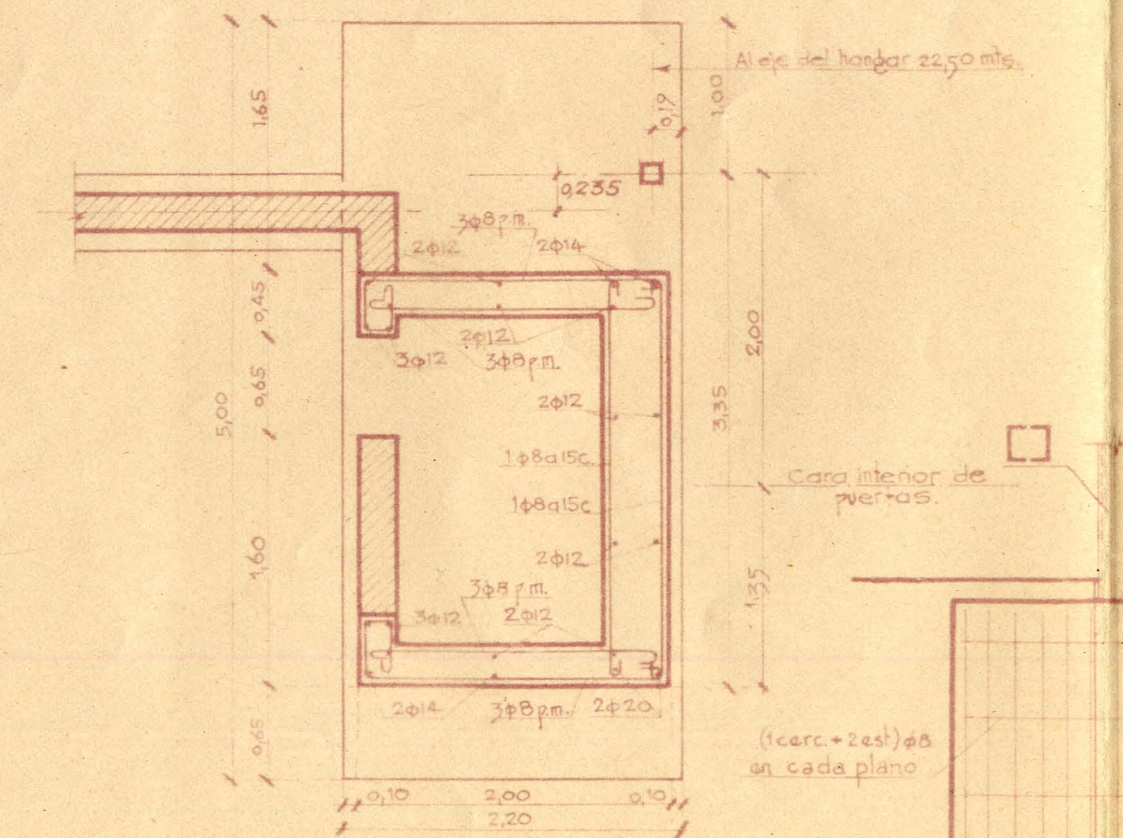
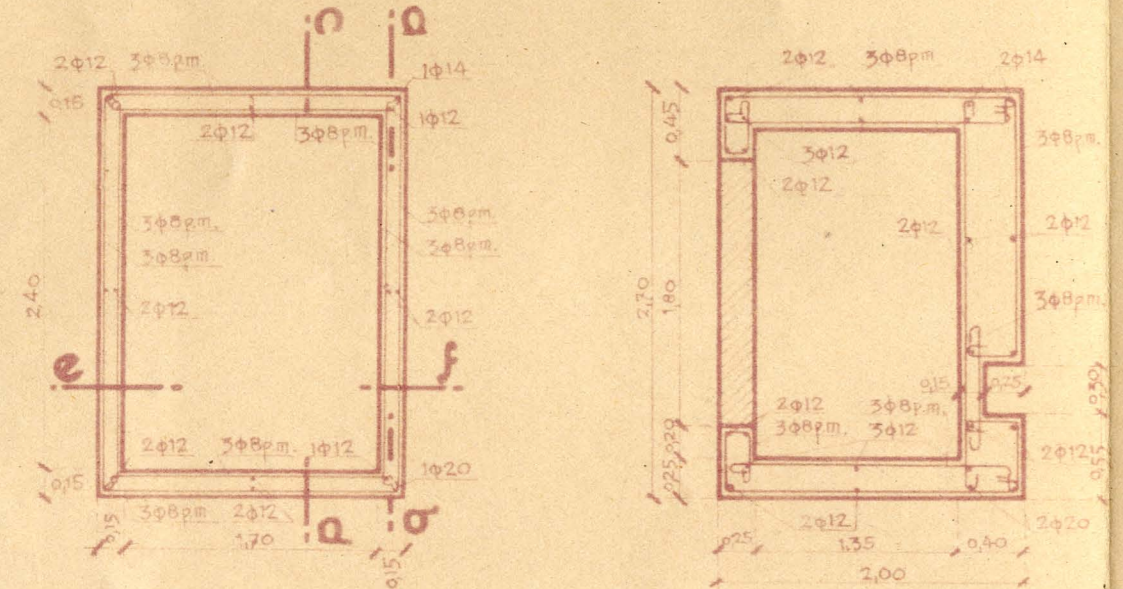
SECCIÓN VERTICAL e-f

PARAMENTO VERTICAL EN FACHADA PRINCIPAL
ESCALA 1:20

SECCIÓN HORIZONTAL I-I SECCIÓN HORIZONTAL II-II

SECCIÓN HORIZONTAL III-III

CONTRAFUERTE EN ADOSA-
DO POSTERIOR
ESCALA 1:100



$5,71 \times 0,38 \times 1,80 = 3,900$
 $3,900 \times 0,18 \times \frac{1}{2} = \frac{3}{0,1} \times \frac{1}{2} \times 0,18 \times \frac{1}{2}$
 $h = \frac{700 \times 4}{2,250} =$

$3,900 \times 1,19 \times 4$
 $2,250$

106	147	160	231
110	191	166	218
138	250	160	160

EDUARDO TORROJA 11 de 1946 ORD. Bovisa TRAZ. Amor. DIB. Toro COMP. ANUAL 584-2701 PROC. OFICINA TECNICA N° 584-2592