

Hangar de 180x47x9 m.

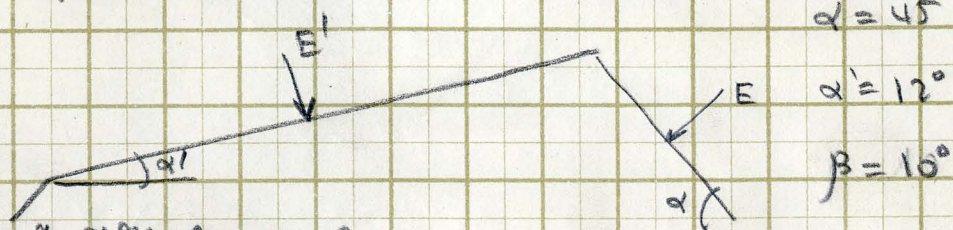
Efectos de viento

N.º 584544

F 20-2-46

Hanger de 180x47x9

Efectos de viento



Segun la Inst<sup>on</sup> Española

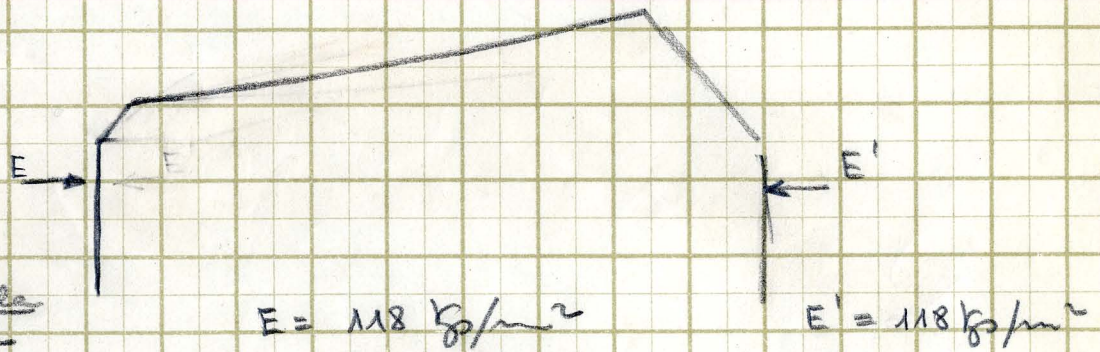
$$E = 120 \times \cos^2(\alpha + \beta) = 81 \text{ Kg/m}^2 \quad \gamma = 56 \text{ Kg/m}^2$$

$$E' = 120 \times \cos^2(\alpha' + \beta) = 14 \text{ " } \quad \gamma = 12 \text{ "}$$

Segun la Inst<sup>on</sup> Prusiana

$$E = +50 \text{ Kg/m}^2 \quad \gamma = -45 \text{ Kg/m}^2$$

$$E' = +65 \text{ " (pomerica) } \quad \gamma = -132 \text{ "}$$



γ = Española

$$E = 118 \text{ Kg/m}^2$$

$$E' = 118 \text{ Kg/m}^2$$

γ = Prusiana

$$E = \begin{cases} +88 \\ -132 \end{cases}$$

$$E' = \begin{cases} +88 \\ -44 \end{cases} \text{ "}$$

Inst. Esp<sup>la</sup>

Multiplicar los valores anteriores por 1,25.

$$E = 148$$