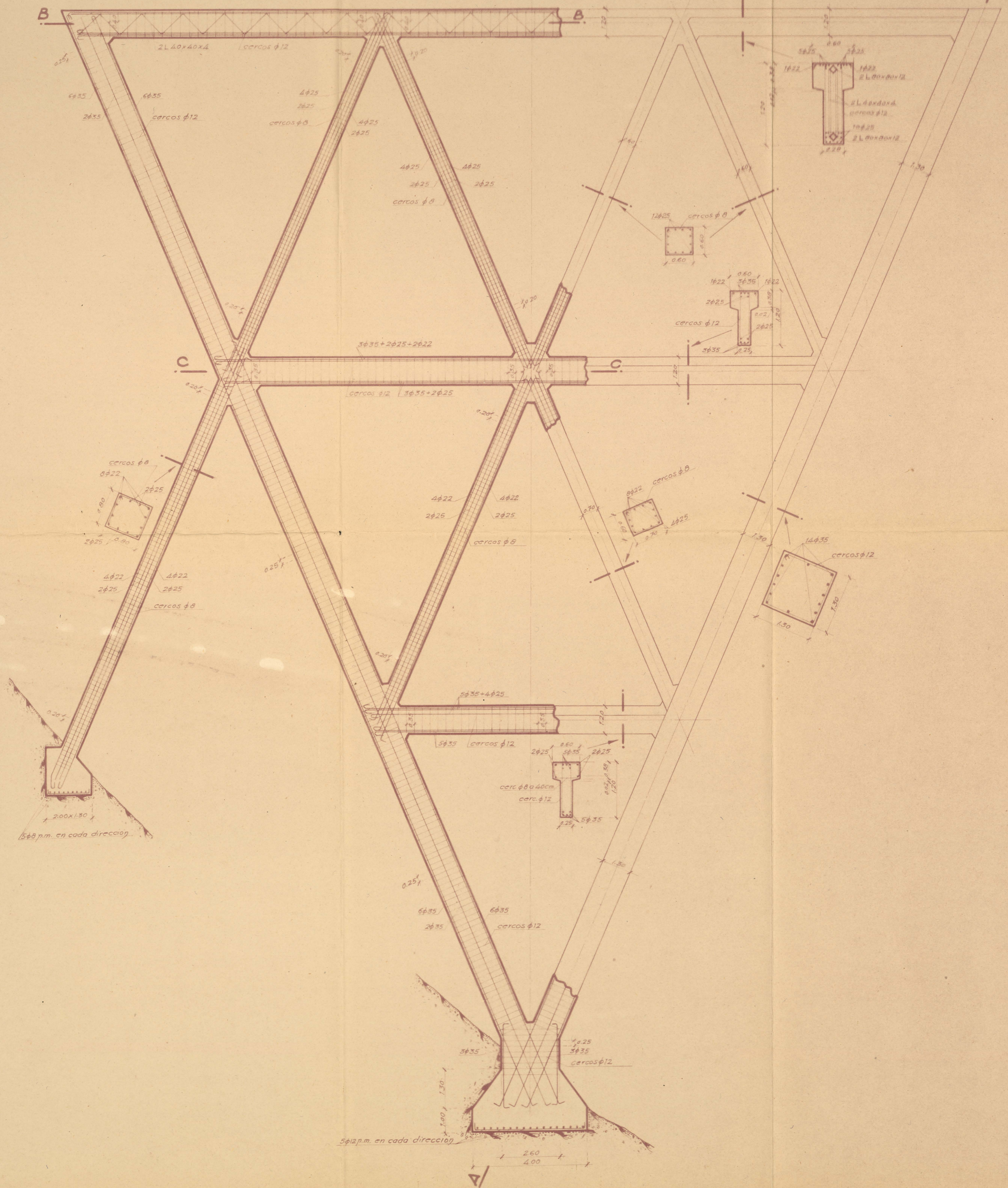


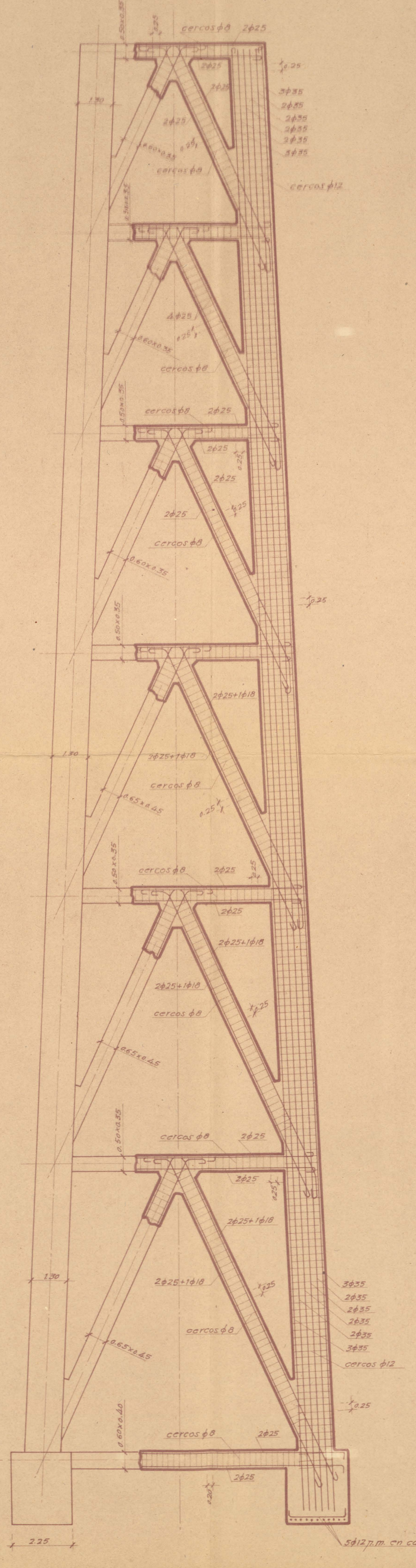
SEMI-SECCIÓN LONGITUDINAL

ESCALA 1:100

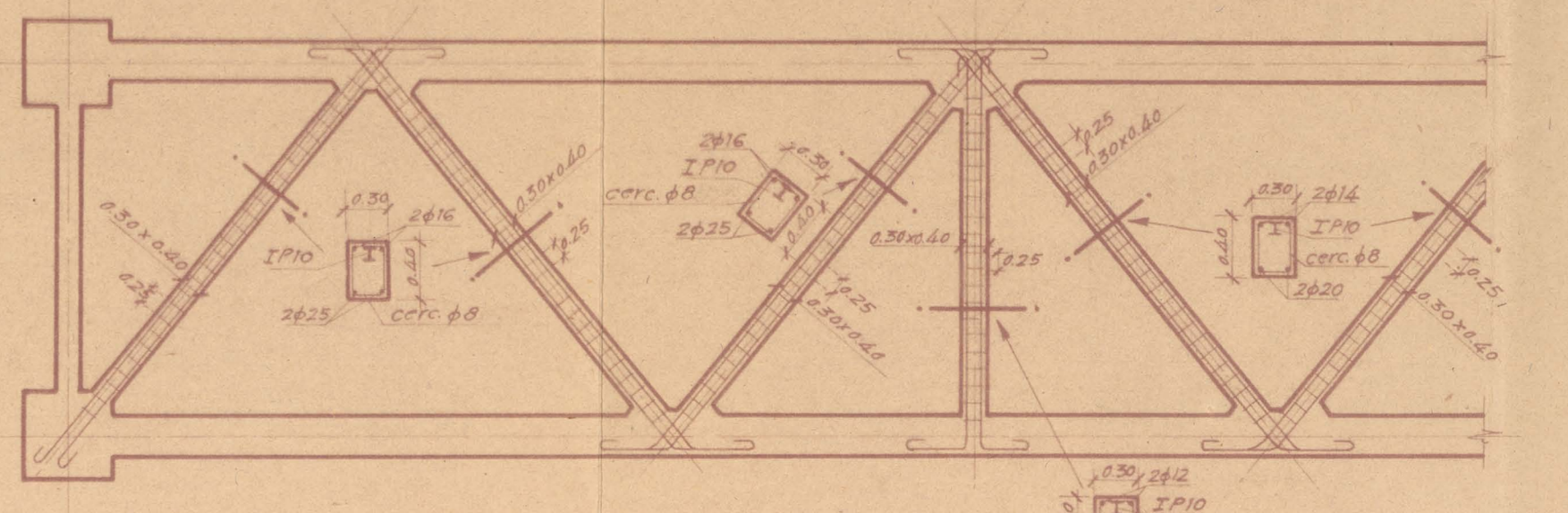
SEMI-ALZADO



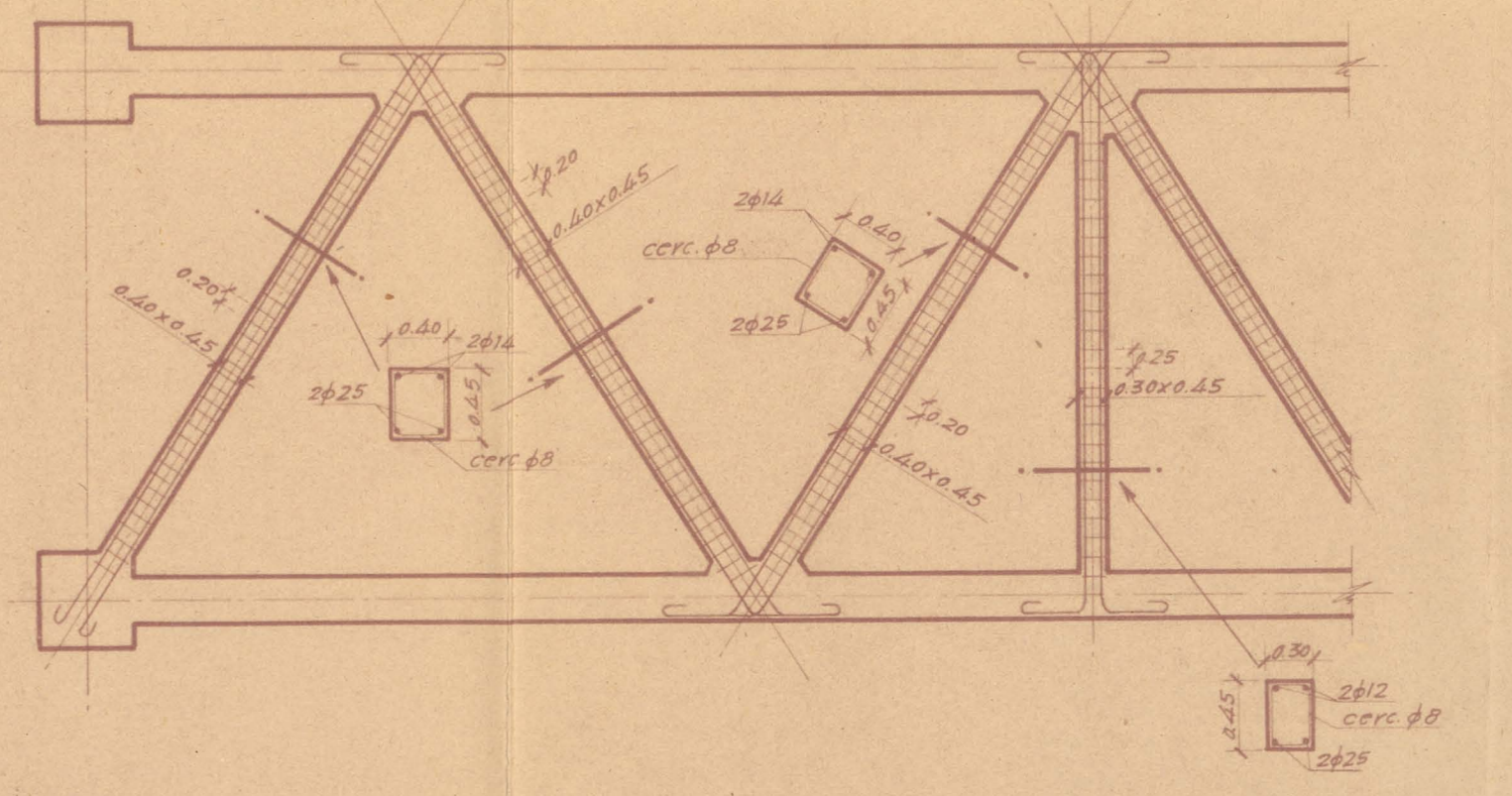
SECCIÓN A-A
ESCALA 1:100



SECCIÓN HORIZONTAL B-B
ESCALA 1:100



SECCIÓN HORIZONTAL C-C
ESCALA 1:100



EDUARDO TORROJA / 4. 1949 ORD. 86000 TRAZ. Amor. DIB. Dise. COMP. ANULA AL. PROC.

OFICINA TECNICA N. 666.203