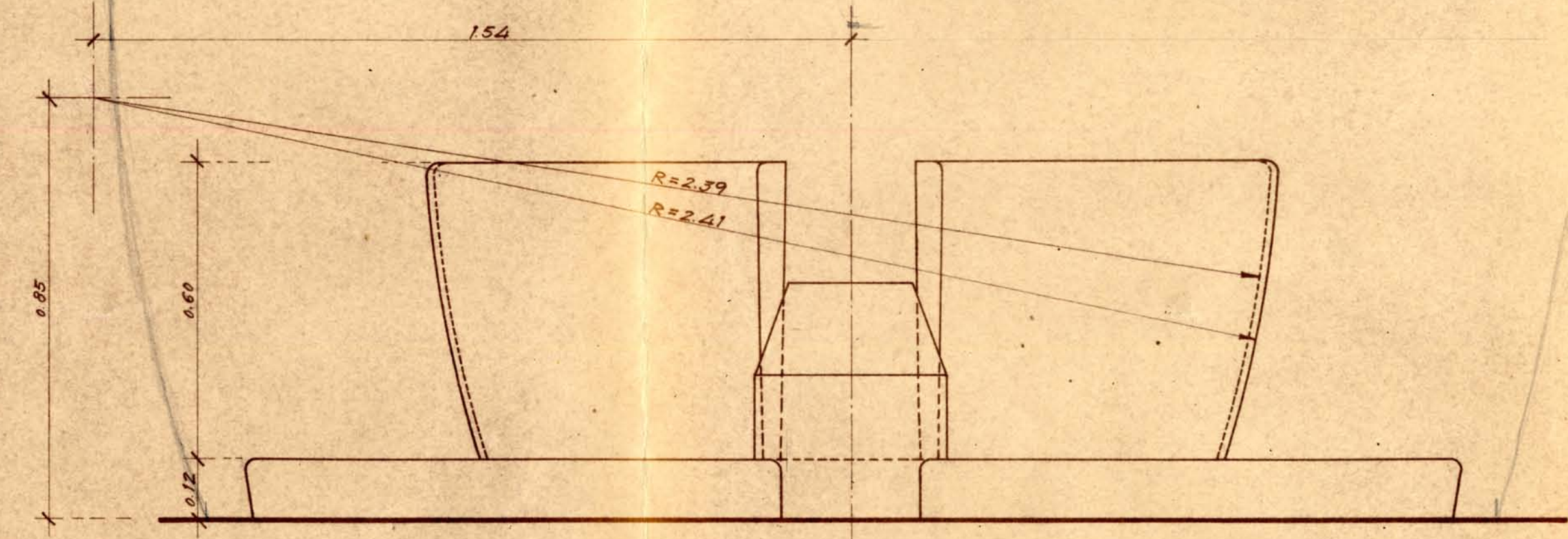


IGLESIA EN PONT DE SUERT.-NICHO DEL SANTO CRISTO

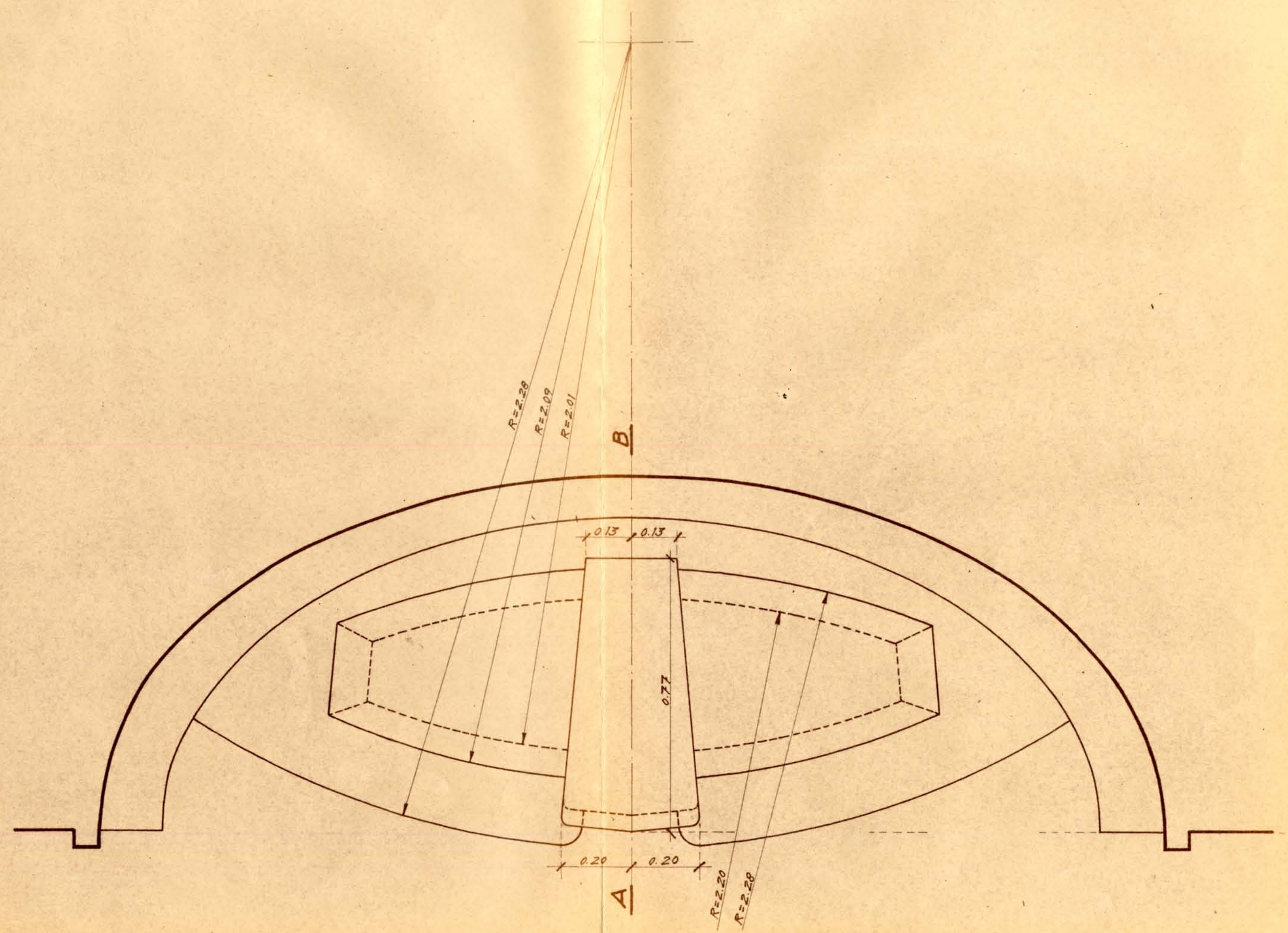
ESCALA 1:10

EDUARDO TORROJA
OFICINA TECNICA N.º 291.268
ORD. 195
TRAZ.
DIB.
COMP.
ANULA AL
PROC.

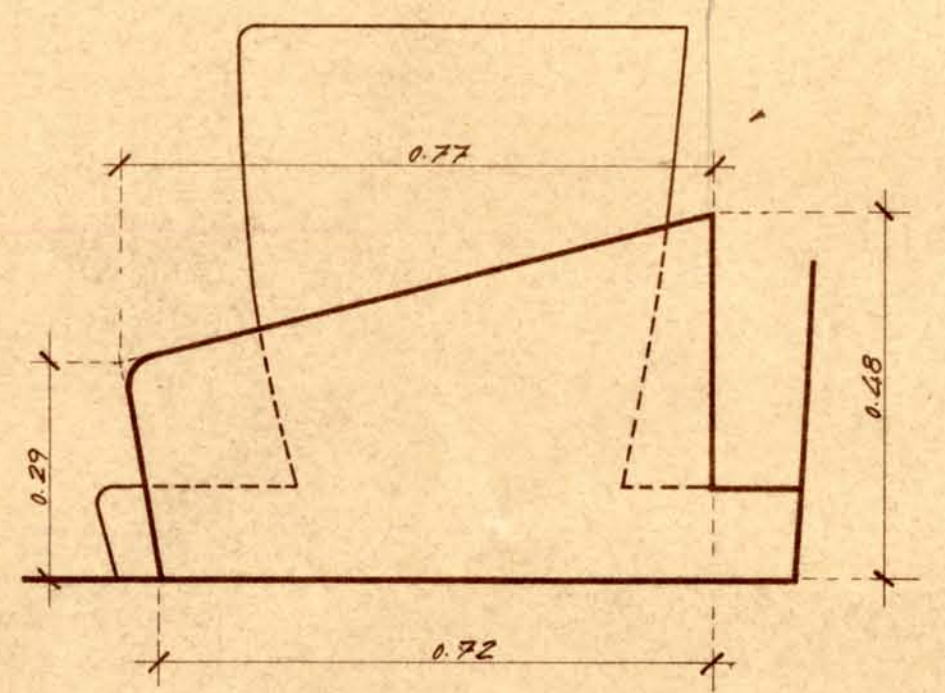
ALZADO



PLANTA



SECCION A-B



40
01.10
01.10
1/10